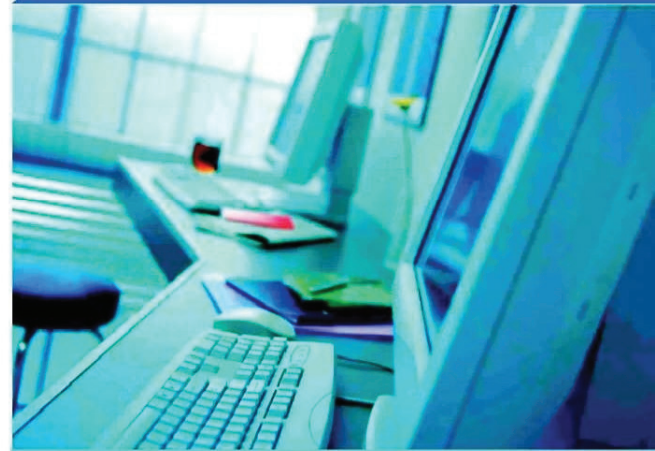


## ONLINE UPS 1-3KVA(1/1)



### AVOHM SERIES

#### Application:

Computer/critical servers/data center/hub & other network device/LAN/WAN.

### FEATURES

- Rack/Tower Convertible Design
- Patented Mimic LCD Display May be Rotated by Simply Pushing Front Button
- True Online Double Conversion
- High Output Power Factor at 0.9PF
- Charger/Fan Status on the LCD Display
- Green Concept Design with Superior Input Voltage Window for Energy Saving
- Hot-Swappable Battery
- 3-level intelligent Charging Method
- Efficiency up to 90%
- Estimated Remaining Time displayed on the LCD
- Support Economic(ECO) Operation Mode
- Matching Battery Pack
- Optional Powerful Charger
- Cold Start
- Power Shedding May Turn Off Uncritical Load in Battery Backup
- Emergency Power Off
- Frequency Converter Mode Is Settable

# TECHNICAL SPECIFICATIONS

Model		HM301	HM301.5	HM302	HM303	
Capacity (VA/W)		1000VA/900W	1500VA/1350W	2000VA/1800W	3000VA/2700W	
Input	Phase	Single phase & Ground				
	Rated Voltage	100/110/115/120/127VAC				
	Voltage Range	55-145VAC				
	Frequency Range	45Hz-65Hz(auto-detect)				
	Power Factor	≥0.98				
	Current THDi	<7% at 100% non-linear load				
	Bypass Voltage Range	Max.voltage: +15%(optional +5%、+10%、+25%) Min. voltage: -45% (optional -20%、-30%) Frequency protection range: ±10%				
	ECO Range	same as the bypass				
Generator Input	Support					
Output	Phase	Single phase & Ground				
	Rated Voltage	100/110/115/120/127VAC				
	Power Factor	0.9				
	Voltage Regulation	±2%				
	Frequency	Utility Mode	50Hz or 60Hz(Synchronized to Mains)			
		Battery Mode	50/60Hz±0.02Hz			
	Crest Factor	3:1				
	THD	≤3% with linear load ≤5% with non linear load				
Waveform	Pure Sinewave					
Efficiency	AC Mode(full load)	up to 90%				
	Battery Mode(full load)	>85%				
	ECO Mode(full load)	>94%				
Battery	Voltage	24Vdc	36Vdc	48Vdc	72Vdc	
	Capacity(standard unit)	12V/9AH				
	Backup Time	Full load>=5 minutes; 50% load>=13 minutes				
	Recharge time to 90%	5 hours				
	Charging Current	1.4A				
	Battery Socket	Anderson like PowerPole Modular Connectors				
Transfer Time		Utility to Battery : 0ms; Utility to bypass< 4ms				
Protection	Overload	AC Mode	Load <100%~150%: 30S; Load > 150%: 300ms then shut down UPS completely			
		Bat. Mode	Load <100%~150%: 30S; Load > 150%: 300ms then shut down UPS completely			
		Bypass Mode	Load > 130%: 60S then shut down output			
	Short Circuit	Hold Whole System				
	Overheat	Line Mode: Switch to Bypass; Battery Mode: shut down UPS immediately				
	Battery Low	Alarm and Switch off				
	Self-diagnostics	Upon Power On and Software Control				
	EPO	Shut down UPS immediately				
Battery	Advanced Battery Management					
Noise Suppression	Complies with EN62040-2					
Alarms	Audible & Visual	Line Failure, Battery Low, Overload, System Fault				
Display	Status LED & LCD	Load/Battery/Input/Output/Operating Mode Information				
	Reading On the LCD	Load/Battery/Input/Output/Operating Mode Information				
Physical	Dimension(WxHxD)mm	440x86.5x430 (2U)	440x86.5x430 (2U)	440x86.5x572 (2U)	440x86.5x696 (2U)	
	Weight (Kg)	15.1	18.1	22.2	25.5	
	External Battery Connection	Anderson like PowerPole Modular Connectors				
Communication Interface	Smart RS232/USB Port	Supports Windows Family, Linux, FreeDSB, etc.				
	Communication Slot	SNMP Card (independent to RS232)				
	RJ45	Built-in Power Surge, Lightning Protection Device				
Environment	Operating Temperature	0℃~40℃				
	Storage Temperature	-25℃~+55℃				
	Humidity	0~90% non condensing				
	Altitude	< 1500m.(derating while > 1500m)				
	Noise	<50dB(at 1 meter)				